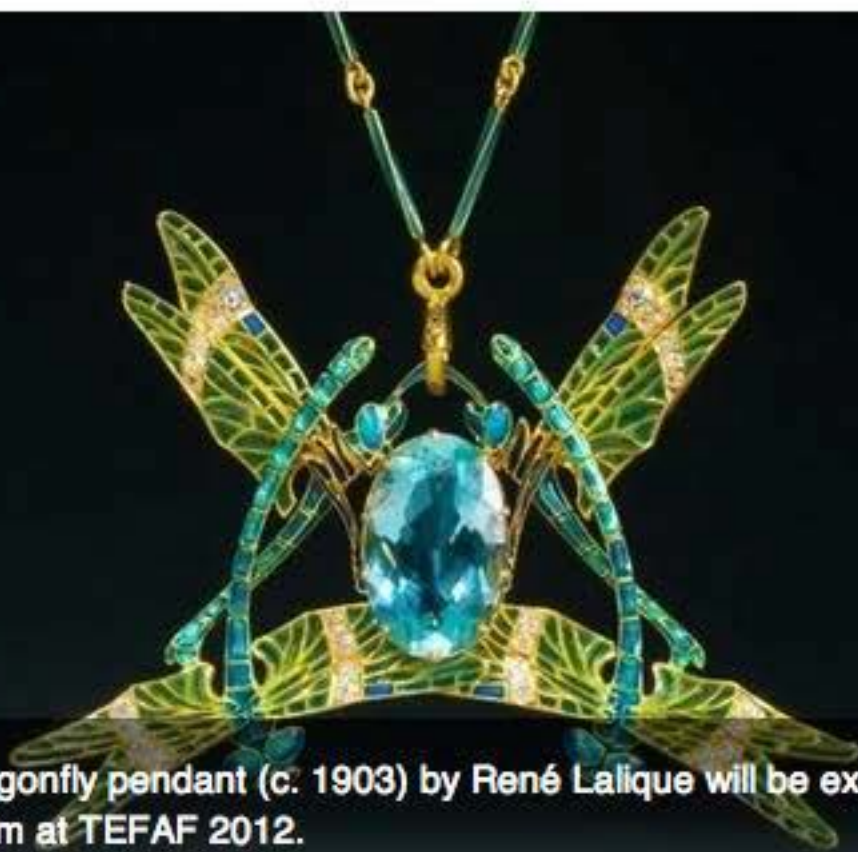


The European Fine Art Fair (TEFAF) 2012 celebrates 25 years

TRAVEL 2012 | JANUARY 13, 2012 | BY: LESLEY PETERSON | + [Subscribe](#)



This Art Nouveau dragonfly pendant (c. 1903) by René Lalique will be exhibited by Epoque Fine Jewels of Belgium at TEFAF 2012.

Credits: TEFAF Maastricht

0 0 0 0
Like Tweet +1 Submit email

Get International Travel alerts!

RELATED TOPICS

- [travel 2012](#)
- [Europe Travel](#)
- [Netherlands Travel](#)
- [antiques](#)
- [art](#)
- [Investing](#)



Advertisement

Heading to Europe this spring? Plan now to attend [The European Fine Art Fair \(TEFAF\)](#), celebrating its 25th anniversary in 2012 from March 16 to 25 in Maastricht, Netherlands.

Like a world-class museum that opens like a magic box once a year to reveal a completely new collection, TEFAF Maastricht is always an incredible experience. 260 blue-chip dealers from around the world offer over 30,000 strictly-vetted, museum-quality objects representing 6,000 years of [art](#) and design. Everything--from classical antiquities and vintage jewels to Old Masters paintings and contemporary masterworks--is for sale.

Visitors enjoy individually-designed gallery spaces providing intimate viewing areas, experts to learn from, the company of an informed and passionate crowd, excellent dining options and lavish floral displays involving thousands of blooms. Special